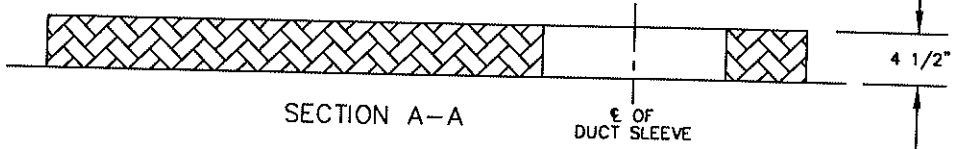


DETAIL "A"



NOTES:

1. ALL PRIMARY AND SECONDARY DUCTS SHALL BE 4" PVC UNLESS SPECIFIED OTHERWISE.
2. INSTALL DUCTS WITH 36" MIN. COVERAGE AND TRENCH MUST BE INSPECTED BY E.U. PRIOR TO BACKFILLING.
3. FULL SIZE TEMPLATE AVAILABLE UPON REQUEST FROM E.U. ELECTRICAL DEPT.
4. 6-4" SECONDARY DUCTS MAXIMUM.

APPROVAL	REVISED	<p>3 Ø TRANSFORMER PAD 75 - 150 KVA (SUPPLIED BY EU)</p>
<p><i>Talbot Wallace</i> <i>efh/ea</i> EU MANAGER OF ENGINEERING DATE</p>	3/25/11	
ISSUED 12/14/04	STANDARD No. E-3.01	