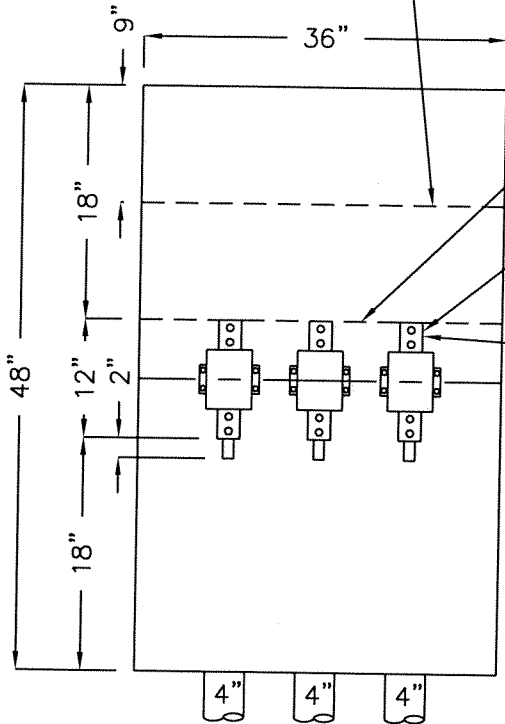
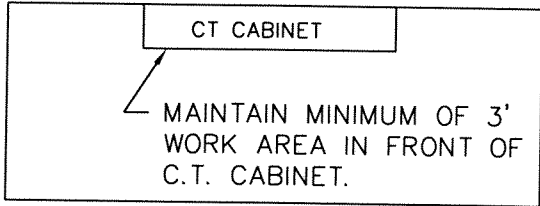


AREA ABOVE THIS LINE FOR CUSTOMER CONDUITS TO POWER PANEL.



ELEVATION



PLAN

AREA ABOVE THIS LINE FOR ROUTING OF CUSTOMER CABLE.

CUSTOMER TO TRAIN CABLES TO MINIMIZE TENSION ON CURRENT TRANSFORMER.

CUSTOMER CONNECTIONS, TYPICAL.

CABINET TO BE GROUNDED TO THE NEUTRAL.


600 AMP SERVICE 2-4" SERVICE CONDUITS }
 800 AMP SERVICE 3-4" SERVICE CONDUITS } CONDUITS FOR INCOMING LINE MUST ENTER THROUGH THE BOTTOM UNLESS WRITTEN PERMISSION IS OBTAINED FROM THE EASTON UTILITIES COMMISSION.

ALL BOXES TO BE MINIMUM OF 16-GAUGE STEEL, NEMA 1 FOR INDOOR OR NEMA 3R FOR OUTDOOR, 12" MINIMUM DEPTH, BOLT ON DOOR, POSITIVE LATCH WITH PADLOCK EYE. GROUNDED MOUNTING - ADJUSTABLE ASSEMBLY OF VERTICAL AND HORIZONTAL BARS.

CURRENT TRANSFORMER CABINET :

INDOOR - CABINET FURNISHED BY EUC AND INSTALLED BY OWNER.

OUTDOOR - CABINET FURNISHED AND INSTALLED BY OWNER.

APPROVAL	REVISED	<p>TOWN OF EASTON AND EASTON UTILITIES COMMISSION STANDARD DETAILS 3Ø CURRENT TRANSFORMER CABINET</p>
 4/25/06 EU MANAGER OF ENGINEERING DATE		
ISSUED		STANDARD No. E-3.00