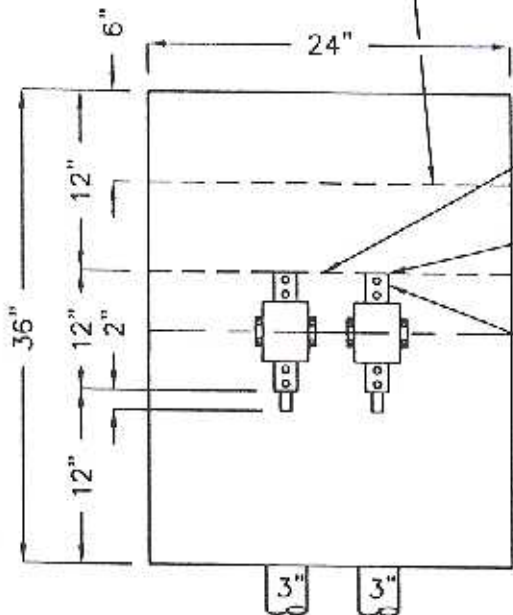


AREA ABOVE THIS LINE FOR CUSTOMER  
CONDUITS TO POWER PANEL.

CT CABINET

MAINTAIN MINIMUM OF 3'  
WORK AREA IN FRONT OF  
C.T. CABINET.

PLAN



AREA ABOVE THIS LINE FOR ROUTING  
OF CUSTOMER CABLE.

CUSTOMER TO TRAIN CABLES TO  
MINIMIZE TENSION ON CURRENT  
TRANSFORMER.

CUSTOMER CONNECTIONS, TYPICAL.

CABINET TO BE GROUNDED  
TO THE NEUTRAL.

ELEVATION

600 AMP SERVICE 2-3" SERVICE CONDUITS, CONDUITS FOR INCOMING LINE MUST ENTER THROUGH THE BOTTOM AS SHOWN UNLESS WRITTEN PERMISSION IS OBTAINED FROM EASTON UTILITIES COMMISSION.

ALL BOXES TO BE MINIMUM OF 16-GAUGE STEEL, NEMA 1 FOR INDOOR OR NEMA 3R FOR OUTDOOR, 10" MINIMUM DEPTH, HINGED DOOR, POSITIVE LATCH WITH PADLOCK EYE. GROUNDED MOUNTING - ADJUSTABLE ASSEMBLY OF VERTICAL AND HORIZONTAL BARS.

CURRENT TRANSFORMER CABINET :

INDOOR - CABINET FURNISHED BY EUC AND INSTALLED BY OWNER.

OUTDOOR - CABINET FURNISHED AND INSTALLED BY OWNER.

APPROVAL

REVISED

*Talbot Whone* 4/25/00  
EU MANAGER OF ENGINEERING DATE

TOWN OF EASTON  
AND  
EASTON UTILITIES COMMISSION  
STANDARD DETAILS  
1Ø CURRENT TRANSFORMER  
CABINET

ISSUED

STANDARD No. E-2.00